

# DELIVERING TOMORROW'S TRANSIT, TODAY

GERRY CHAPUT, P. ENG.  
Executive Vice President, Metrolinx

October 5, 2020 - Value Symposium





PRESTO Card



UP Express



Regional GO Rail Service

## The GO Expansion program will provide a range of improvements across the GTHA:

More  
All-Day  
Service



Service  
in Both  
Directions



Trains at  
least every  
15 minutes



Faster  
and More  
Efficient Fleet



More  
Accessible  
Stations



An Expanded  
Union Station



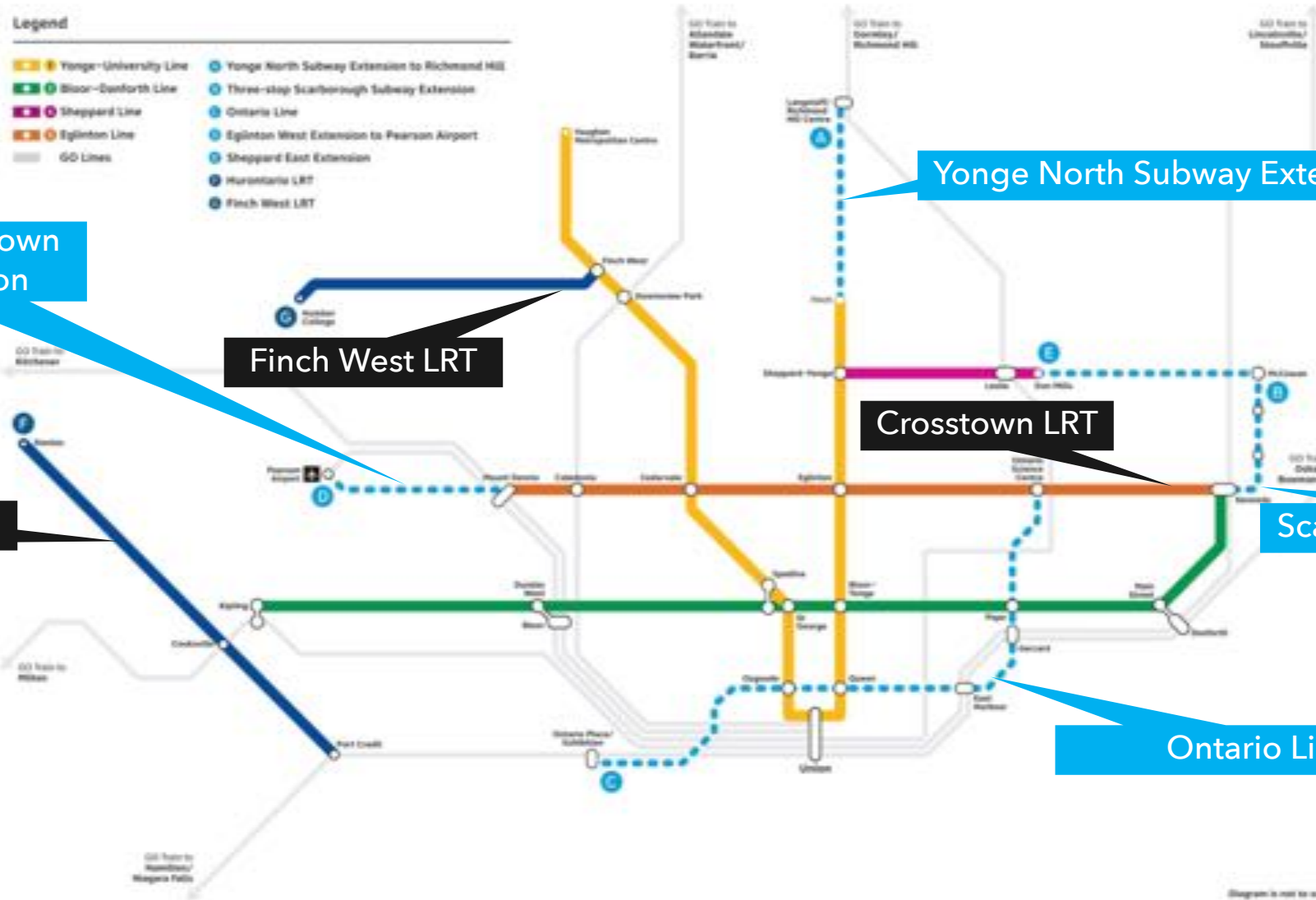
Over 6,000 services  
per week

Trains that are up to  
30% faster and up  
to 50% cheaper per  
train km to operate

Improvements to  
stations access  
and boarding  
and alighting

Capacity for train  
and passenger  
movements for the  
rest of the century

# SUBWAY AND LRT PROGRAMS



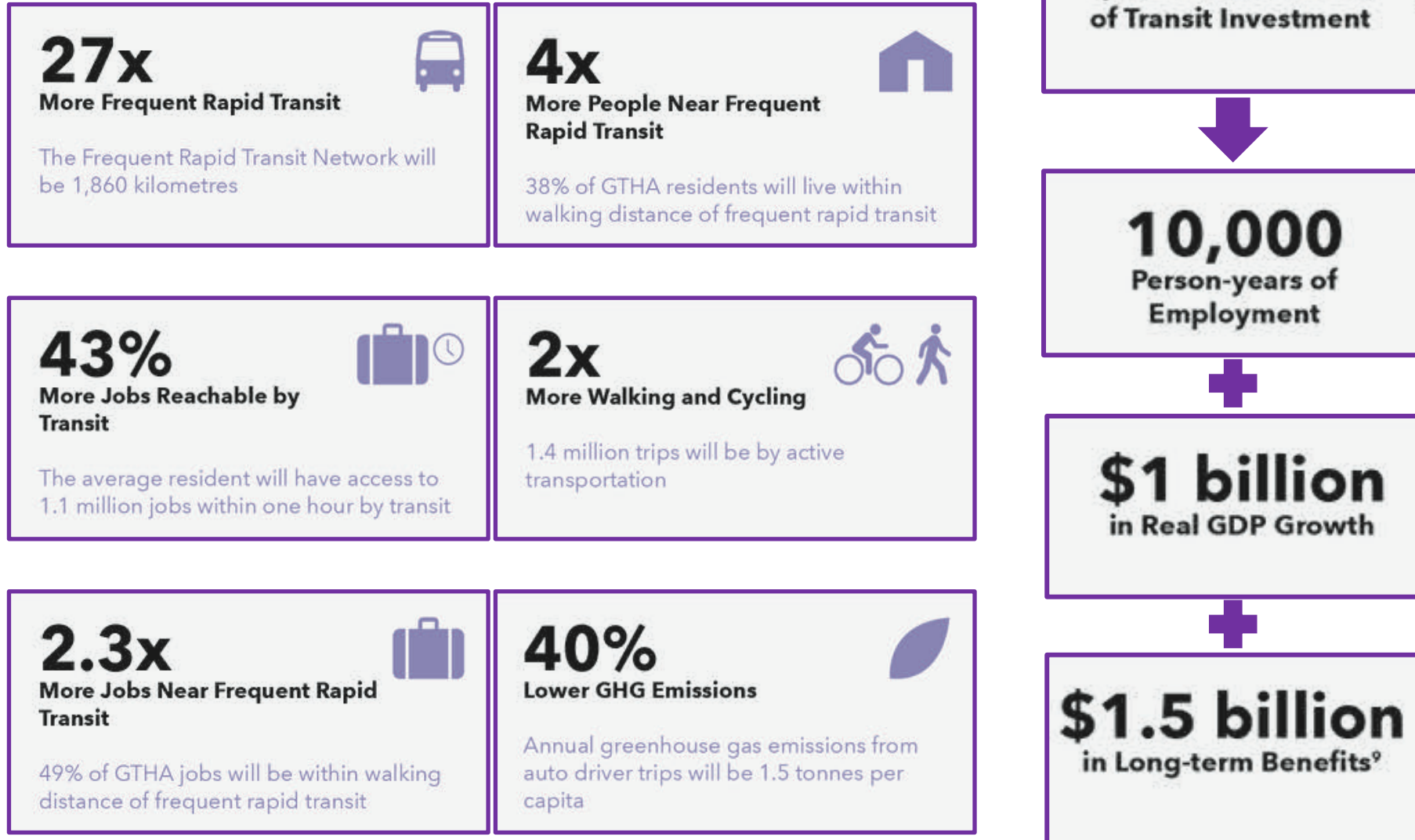


## INVESTMENT CLOCK FOR A \$4B ANNUAL PROGRAM

- Combined Program Value
  - In excess of ~\$70B
- 47% of the current United Nations member states had a GDP less than \$70B
- Calendar Year
  - ~\$11M/day
- Assuming 260 Business Days of 8 hrs
  - ~\$77.0M/week
  - ~\$15.4M/day
  - ~\$1.9M/hour
- Forecast expenditure required
  - >\$6B/year



# 2041 RTP BENEFITS





Eglinton Crosstown LRT Project



TBMs



Finished Tunnel



Eglinton Crosstown LRV



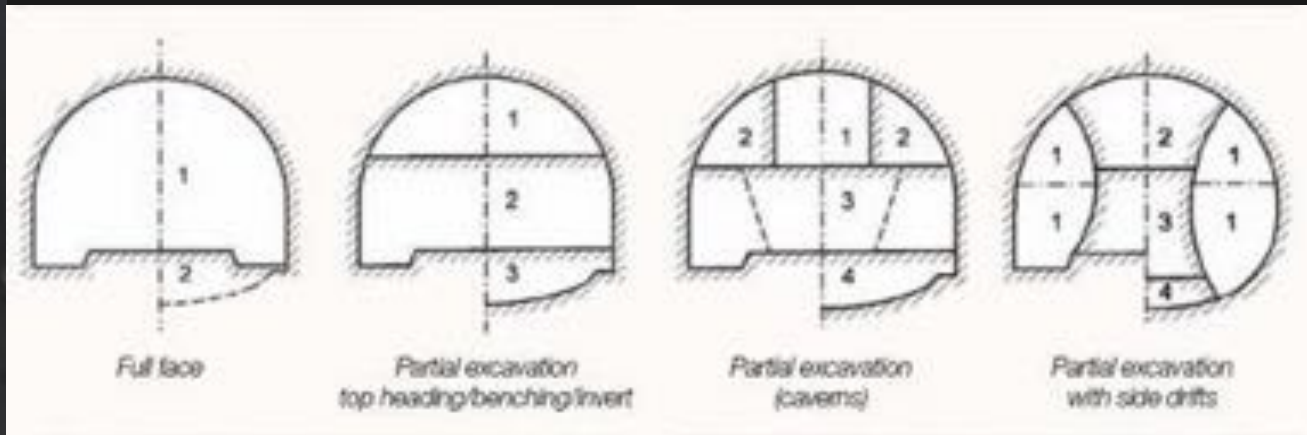
**Former Kodak Building Move:  
Mount Dennis Station**



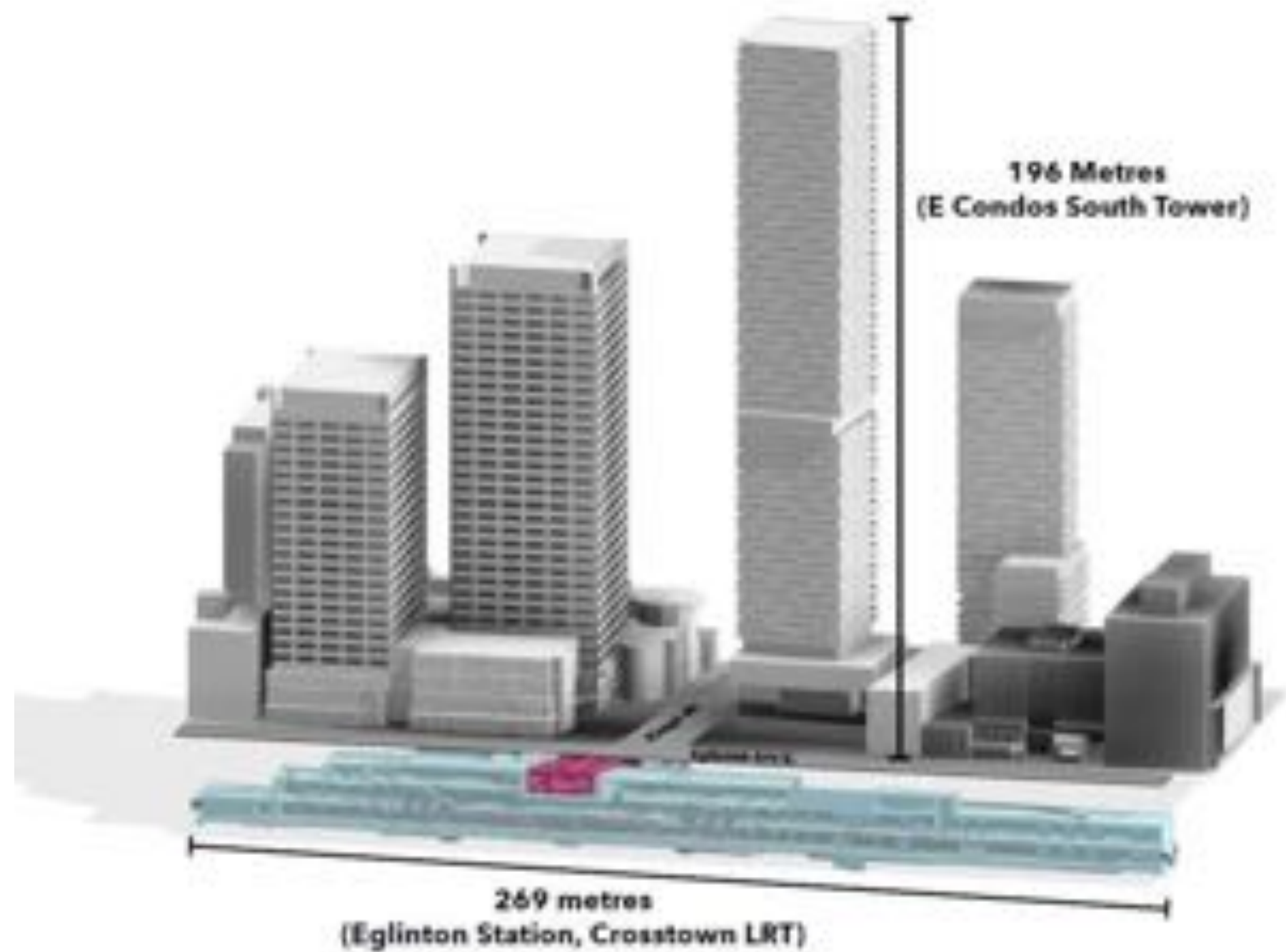
Kodak Move

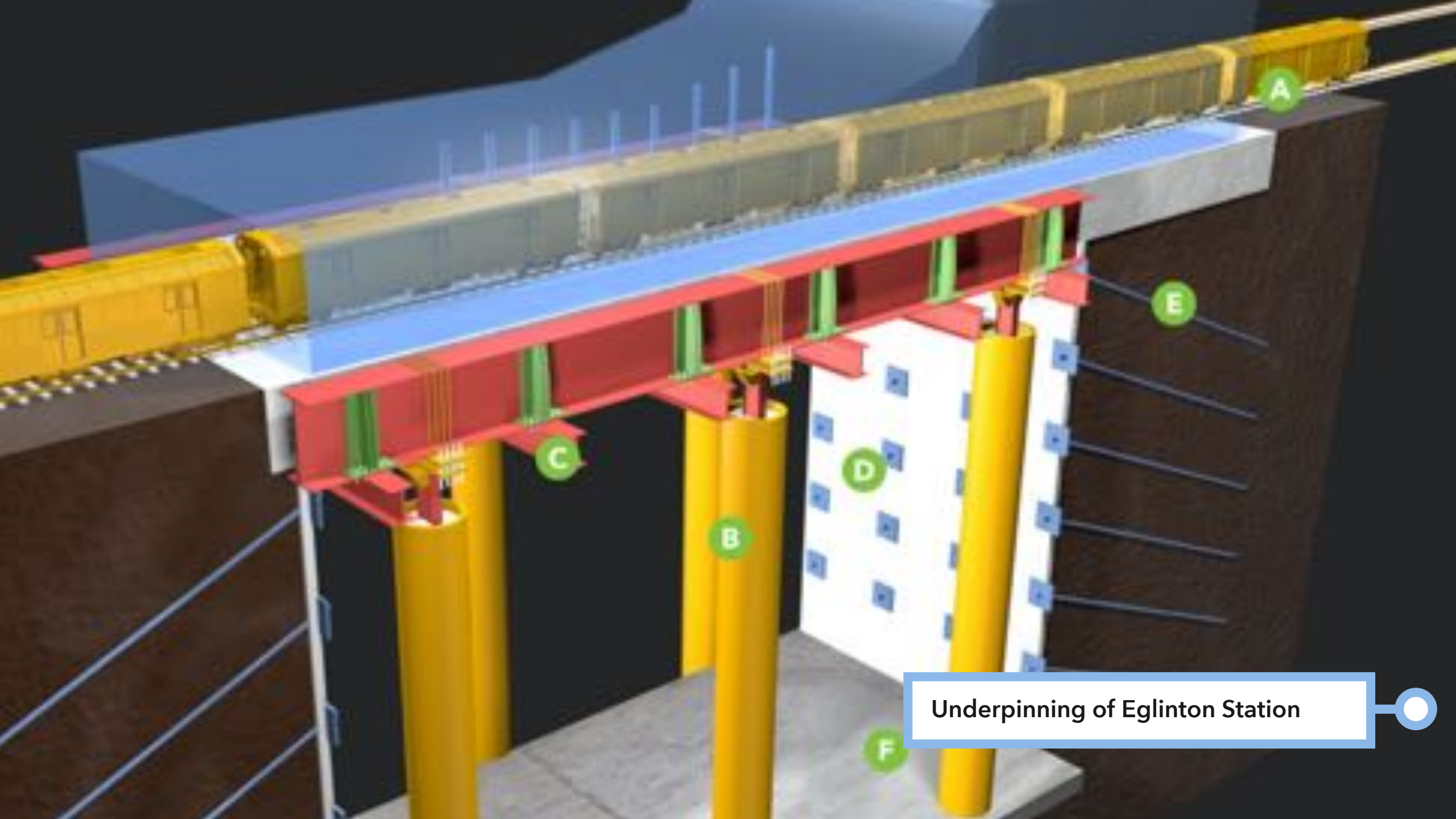


Crossing of Allen Road (West Tunnels)



Mining at Avenue Station





Underpinning of Eglinton Station



Brick Cataloguing

# MOUNT PLEASANT RENDERING





Laird Station



Laird Station - Ceiling Support



Laird Station - Ceiling Construction



Laird Station



Surface Works

## SIGNALING & TRAIN CONTROL SYSTEM (S&TCS)

- Nearly completed installation of all wayside equipment (Axle Counters, Switch Machines, Signals, etc.) in the MSF
- Cabinets have been installed in the signaling bungalows





Maintenance & Storage Facility



Back Up Power Facility

# FINCH WEST RAPID BRIDGE REPLACEMENT



Over two weekends in June, bridge decks were moved into place on Highway 400 to form the new bridge spans. Crews used a self-propelled modular transporter to move two old bridges out, and new ones in.

# FOUR FACETS OF COMMUNITY BENEFITS

---



1. PROFESSIONAL,  
ADMINISTRATIVE &  
TECHNICAL JOBS



2. APPRENTICESHIPS



3. LOCAL  
JOBS



4. SOCIAL ENTERPRISE  
PROCUREMENT

## HIGHWAY 401 RAIL TUNNEL

- SEM excavation completed for tunnel 1, in progress for tunnel 2



## OUR VALUE TOOLBOX

- Rigorous planning and business case development with Project Sponsors
  - Stage Gate approvals required throughout the lifecycle of the project
  - Solid Program and Project Management principles and procedures document and included in the Knowledge Hub
  - Change Controls process that ensures value is maintained and benefits are realized
  - Transit Oriented Communities and Development
  - Monthly progress reporting on safety, cost, schedule, risk, quality and issues
  - Training, development, sharing of Lessons Learned
  - Early stages of implementation of a formal Value Analysis process
-



Gerry.Chaput@metrolinx.com