

Riverside South Rapid Transit Study

Value Planning Workshop

Peter Steacy, P. Eng.
Program Manager
Transportation Environmental Assessments
City of Ottawa

Christopher Gordon, P. Eng.
Project Manager
Transportation Planning
National Capital Engineering



2006 CSVA Conference, October 24, 2006
Markham, ON

Riverside South

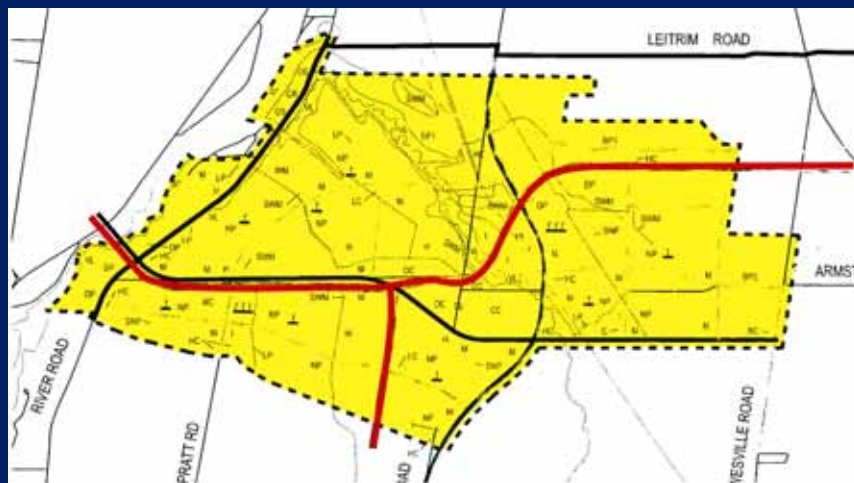


Riverside South Community History

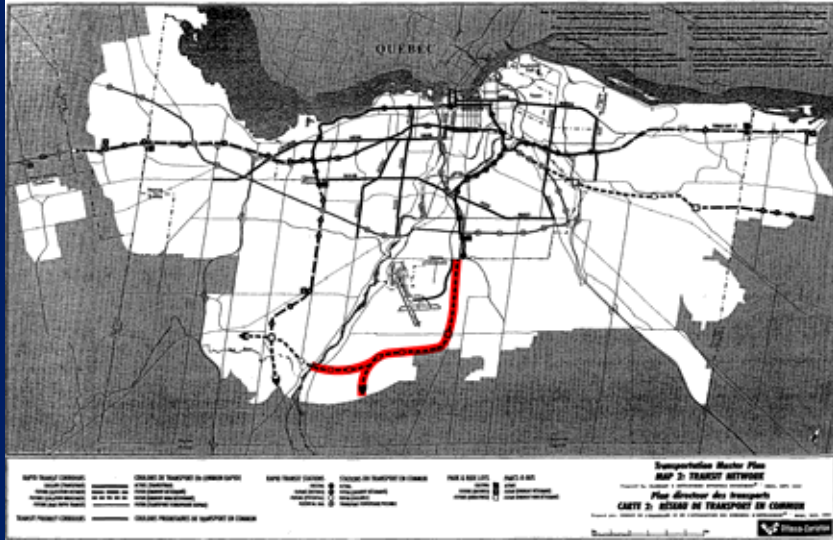
- **1988 Regional Official Plan**
 - South Urban Community Boundaries (7000 units)
- **1992 Gloucester OPA 3 Development Plan**
 - 11,000 dwelling units
- **1997 Transportation Master Plan**
 - Confirmed need for transportation improvements
- **Regional Official Plan**
 - 8000 dwelling units (2021)
 - Allows up to 16,500 units with servicing



1992 Riverside South Community Plan



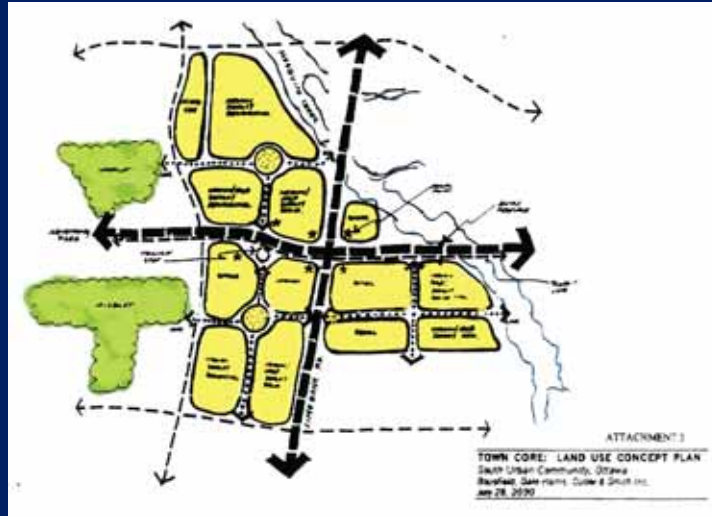
1997 RMO Transportation Master Plan



Roadway Environmental Assessments



Proposed Town Centre Land Use Plan

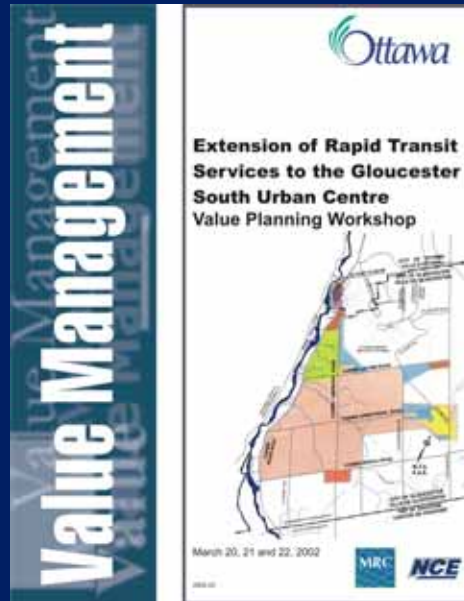


Catalyst for Rapid Transit Study

- Developers unhappy with land required for combined Right of Way (45 m for Road, 40 m for BRT)
- Combined facility not in keeping with City's transit supportive development objectives
- Conflicting land uses such as planned school sites, Fire Station, Town Core Land Use Plan
- Political desire to implement Transit first



Riverside South Rapid Transit Study

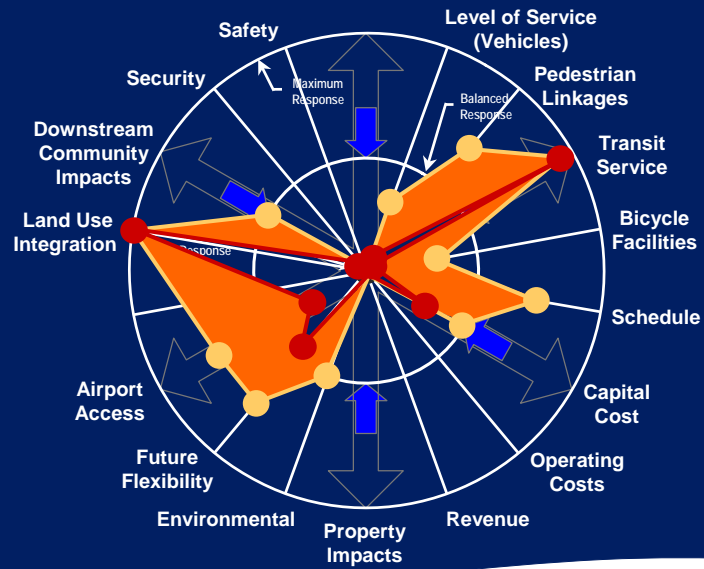


Value Planning Study

- **Multidisciplinary team**
 - 22 specialists made up of Developers, City Planners (transportation, transit, land use, infrastructure) and Agencies
- **3 Day workshop**
 - Intensive review of the problems/opportunities
 - Study project functions
 - What do we need?
 - What do we want?
 - 185 ideas
 - Shortlisted to 60 ideas for development



Quality Model



Value Enhancement Opportunities

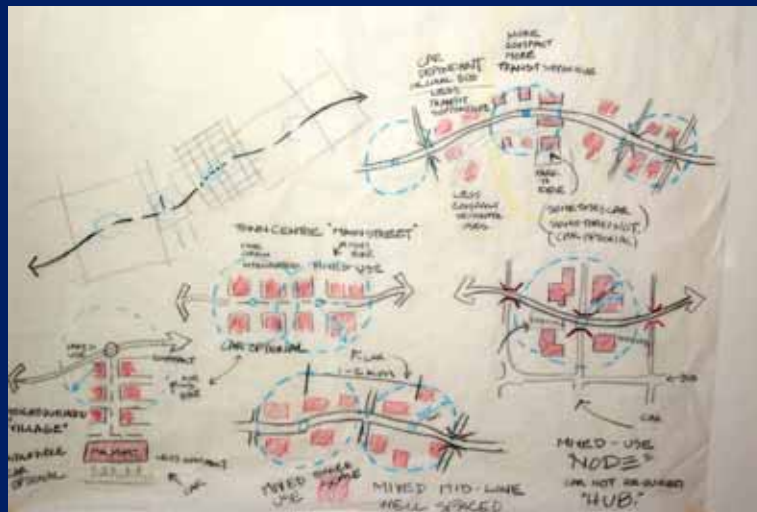
- Alignment North
- Alignment South
- Planning/ Mixed Use Development
- Technology and Staging



Alignment



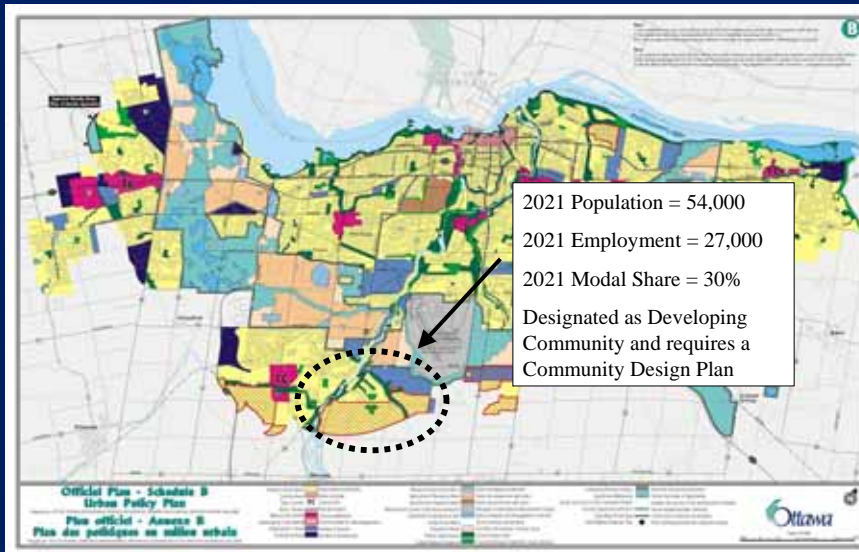
Development/Service Scenarios



Technology



2003 Official Plan and TMP



Various Planning Initiatives

- Riverside South Community Design Plan
- Rapid Transit Expansion Study
- North South Light Rail EA



Community Design Plan



Rapid Transit Expansion Study



- Study Purpose:

“To develop a strategic plan to expand our Rapid Transit System to meet the transportation objectives of the TMP and OP”

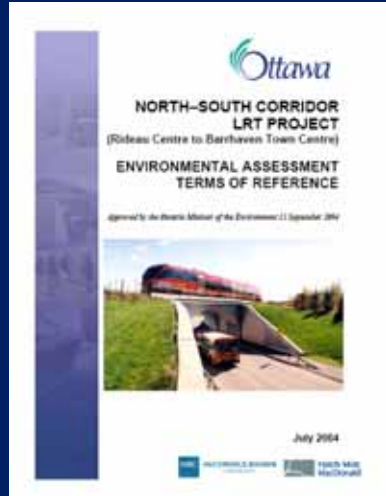
The study was funded in part by Transport Canada and the Green Municipal Funds - a partnership of the Government of Canada and the Federation of Canadian Municipalities - and by the Province of Ontario through the Transit Investment Partnership (TIP) program.



Rapid Transit Expansion Study



North-South Corridor LRT Project EA

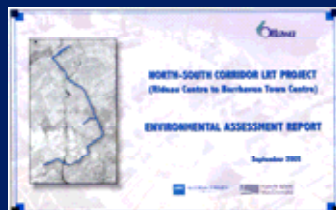


- Provincial and Federal EA Processes
- Needs and Alternative Options
- Corridors and Alignments
- Stations, Park & Ride Lots & Supporting Infrastructure
- Impacts and Mitigation
- Capital Costs
- Staging



North-South Corridor LRT Project EA

01 Apr 2004	Study Initiated
23 Jun 2004	ToR Approved by Council
05 Jul 2004	ToR Submitted to MOE
15 Sep 2004	ToR Approved by Minister of the Environment
15 Jul 2005	EA Recommended Plan Approved by Council
	☞ <i>Authorized Staff to submit EA for Approvals</i>
	☞ <i>Additional Work to be Undertaken</i>
09 Sep 2005	Ontario EA Report Submitted to MOE for Approval
29 Sep 2005	Federal EA Screening Submitted to CEAA for Approval
May/Jul 2006	Ontario and Federal EAs Approved



North-South Corridor LRT Project EA



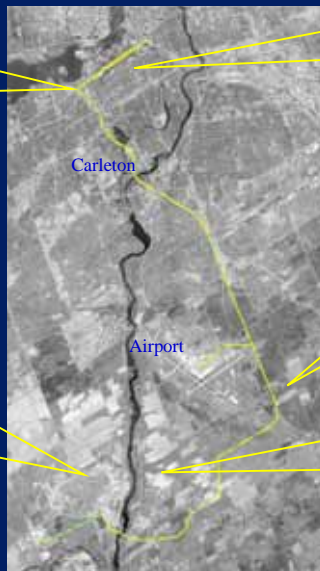
- Rideau Centre to Barrhaven Town Centre
- 31 km Twin-Track Electric LRT
- 34 Stations
- 5 Park & Ride Lots
- Airport Connection
- Maintenance & Storage Yard



North-South LRT Project Connects Communities



Bayview Lands



Carleton

Airport



DOUDS



Leirtrim CDP



South Nepean
Town Centre CDP



Riverside South CDP



North-South LRT Project Virtual Tour



Thank You

